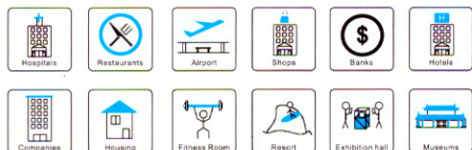


# RFP-140RG

Raised/Concrete/Trunking system floor box

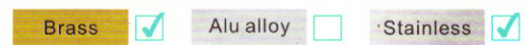
## Features:

- 1.4 direction junction boxes :configured with up to four opening sides in combinations to provide for a wide variety of duct applications.
2. Junction boxes have adjustable cover plate assemblies which allow for adjustment upwards permitting accurate leveling to the finished floor.
3. A series of stainless or brass pans and rings are available to accept a wide range of floor finishes.

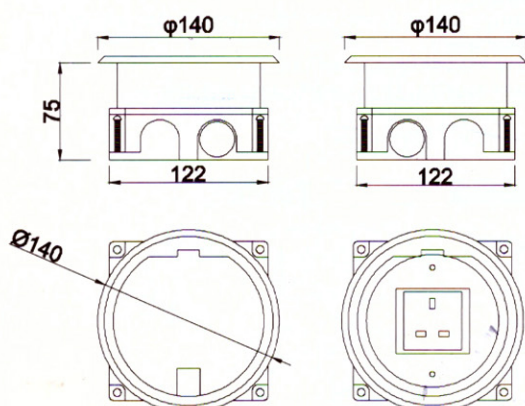


## Technical Parameters :

Parameter	Description
Panel Material	Brass alloy (H62)/Stainless steel(304)
Panel Dimension(mm)	Φ140
Cutout(mm)	125*125
Capacity of modules	2 ways modules
Horizontal mounting	Horizontal installation
Sink box Material	Steel+Zinc plated
Base box dimension(mm)	125*125*60
Available modules	45*45/22.5*45(mm)



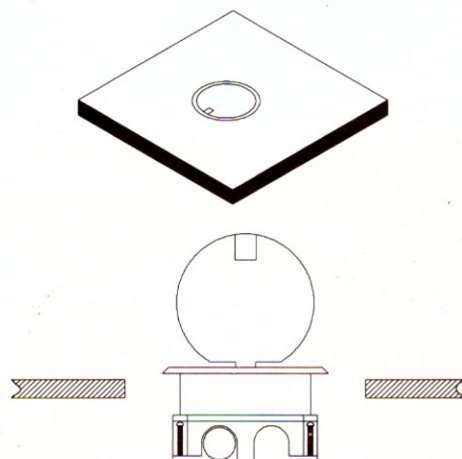
## Outline Drawing: Unit:mm



(Image is for reference only.)

## Installation Guide

The concrete is then added to keep it level with the ground



**A.T.M tech.**  
א.י.ט.א.מ - סק בע"מ