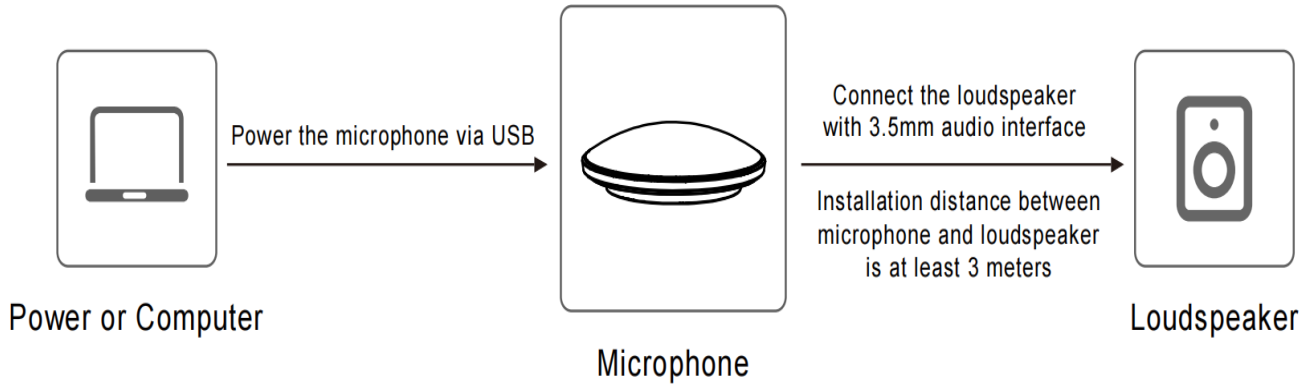


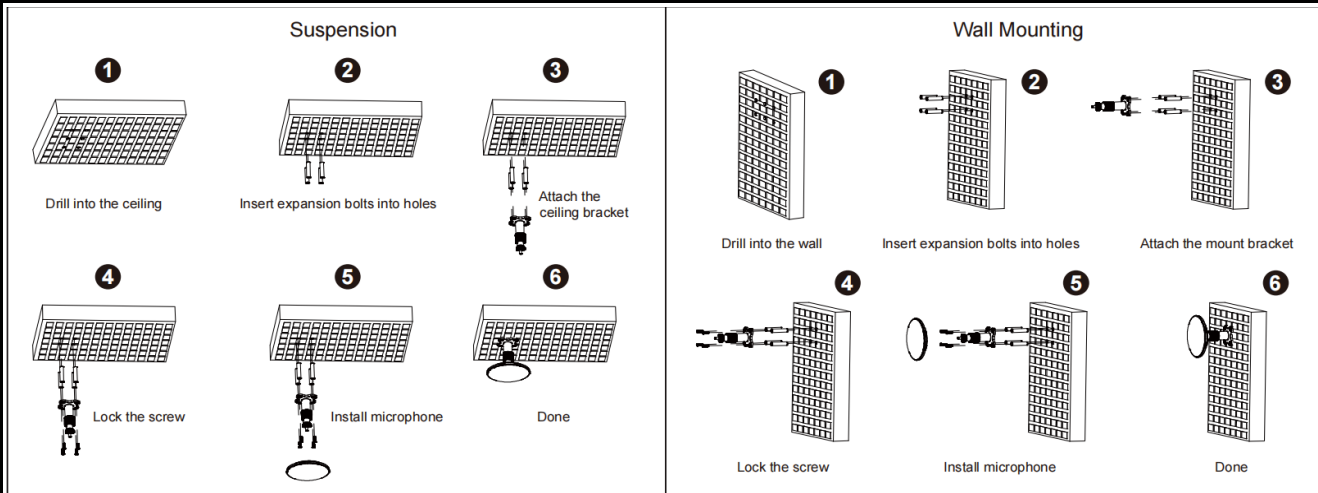
Long-distance pickup radius 8m, at least 3m away from the loudspeaker

Main Features	<ul style="list-style-type: none"> ● Non-sense Amplification, Clear Sound Quality Freeing teachers' hands, and contact-free amplification is convenient for epidemic prevention and maintaining a healthy teaching environment. ● Microphone Array Teachers can move freely in a larger area of the classroom, the speech of students in the classroom can be picked up, and teachers and students can hear each other's clear voice. ● Adaptive Fast Convergence Algorithm Support howling suppression, reverberation suppression, intelligent noise reduction and automatic gain control, you can easily listen in noisy environments. ● Super Audio System Integration Built-in powerful audio processing unit, ultra-low signal processing delay, no need for additional cabinets to place rack-mounted audio processors, easy for fast and low-cost installation and deployment. ● Simple and Convenient Operation and Maintenance Solve equipment management problems such as the issuance, recycling and charging of wireless microphones, small bees and other equipment, and reduce operation and maintenance costs.
Packing List	1 x Non-inductive Loudspeaker Microphone 1 x 3.5mm Audio Cable 1 x Quick Start Guide 1 x Quality Card
Model	MA800
Name	Non-inductive Loudspeaker Microphone
Basic	
Microphone Type	Omnidirectional Microphone
Array Microphone	Built-in 7 mics to form a circular array microphone
Sensitivity	-D2326 dBFS
Signal Noise to Ratio	> 64 dB(A)
Frequency Response	20Hz - 16kHz
Sampling Rate	32K sampling, high resolution broadband audio
Pickup Range	8m
Automatic Echo Cancellation (AEC)	Support
Automatic Noise Suppression (ANS)	Support
Automatic Gain Control (AGC)	Support
Hardware Interface	
Audio Output	1 x 3.5mm line out
USB Interface	1 x USB audio interface
Generic Specification	
Power Input	USB 5V
Dimensions	Φ 130mm x H 33mm

Network Application



Product Installation



Appearance and Interface

1. AEC-REF:Signal input interface, input remote audio signal(This interface is not available)

2 .SPK-OUT:Audio signal output interface, output to the speaker.

3 .AEC-OUT:Signal output interface, output to remote equipment(This interface is not available).

4 .USB:USB interface is used to connect host and charge the microphone.

