



Ten 47

Lugit

Power Cable Joining System



Ten 47 Limited

Unit 2B Frances Industrial Park
Kirkcaldy, Scotland, UK
KY1 2XZ
Tel: +44 (0)1592 655725
Fax: +44 (0)1592 651049
Email: admin@ten47.com

LUGIT

POWER CABLE JOINING SYSTEM



LUGIT is a safe and efficient means to make temporary connection / extensions of single core power cables that are pre-terminated with copper lug terminals.

- Increase cable utilisation.
- Standardise on cable stock.
- Decrease cable purchase.
- Reduce transportation of cables.
- IP67 Protected when assembled.
- Operating Voltage: 1000Vac.
- Max Current: 660Amp (depending on cable c.s.a. and application).
- Voltage to Earth: max 2kv ac / 3kv dc.
- Flashover: min 6.8kv ac – 1 minute.
- Insulation Resistance: >5Mohm @500V dc
- Voltage Drop: <5mV
- 2 Lugit sizes available depending on Lug and cable dimensions.
- From 35mm² up to 120mm² and
- From 150mm² up to 300mm².
- Lug palm widths up to 45mm.
- External Cable Ø from 14.5mm up to 37mm.
- Consult Ten 47 if using different Lug sizes and/or cable sizes.
- Assembles in approx. 2 minutes.
- No special tools required.
- Reusable and Field Installable.
- No need for Connectors or Junction boxes.
- 0.85kg and 1.50kg nominal weight



Ten 47 Limited

Unit 2B Frances Industrial Park
Kirkcaldy, Scotland, UK
KY1 2XZ
Tel: +44 (0)1592 655725
Fax: +44 (0)1592 651049
Email: admin@ten47.com



Ten47

ASSEMBLY INSTRUCTIONS

LUGIT 35/120

Assemble the components over the 2 cables to be joined as shown below.



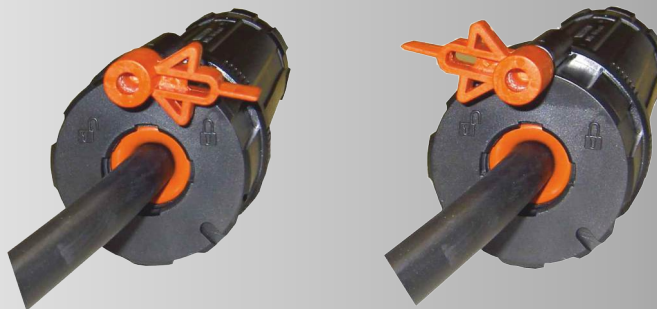
Connect the Lugs into the centre joining block and tighten with a spanner.



Slide the Inner Sleeve towards the joined cables and then slide the Lugit body over the inner sleeve. This keeps the joined cables positioned in the centre of the Lugit body. Position each of the sealing donuts and tighten the rear backnuts.



Using the remote locking/release key, turn the "red" locknut clockwise to lock and secure the Lugit. Turn anti-clockwise to unlock the Lugit to allow removal from the cables.



Item	Part Number
LUGIT UNIT	LUGIT 35/120
Green Band	LCB-GN
Blue Band	LCB-BU
Brown Band	LCB-BR
Black Band	LCB-BK
Grey Band	LCB-GY
Locking / Release Key	REM-LK
Lug Palm Width / Bolt Hole	30mm max / 10mm or 12mm
External Cable Ø	14.5mm – 25mm

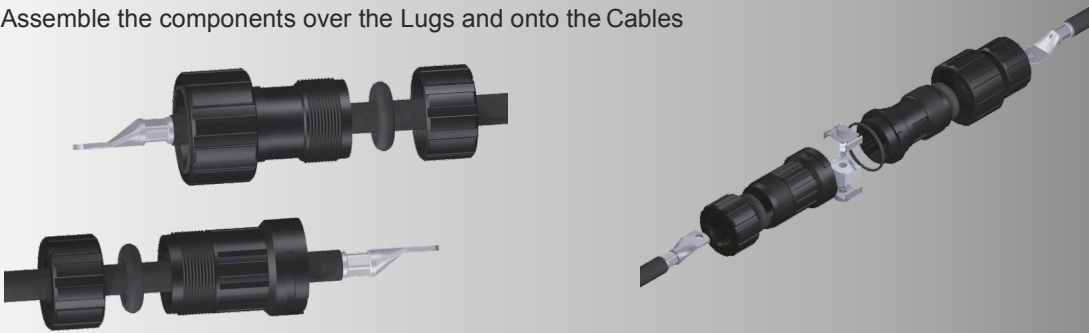
Ten 47 Limited

Unit 2B Frances Industrial Park
Kirkcaldy, Scotland, UK
KY1 2XZ
Tel: +44 (0)1592 655725
Fax: +44 (0)1592 651049
Email: admin@ten47.com

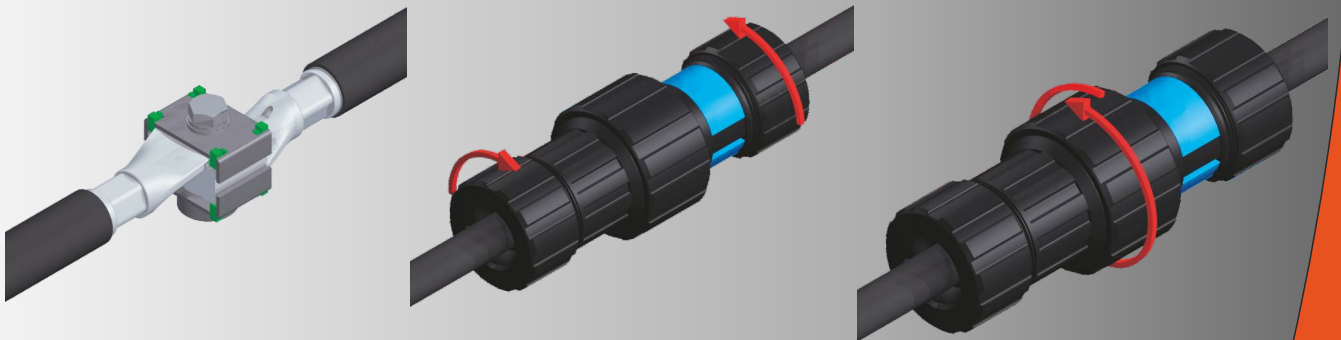
ASSEMBLY INSTRUCTIONS

LUGIT 185/300

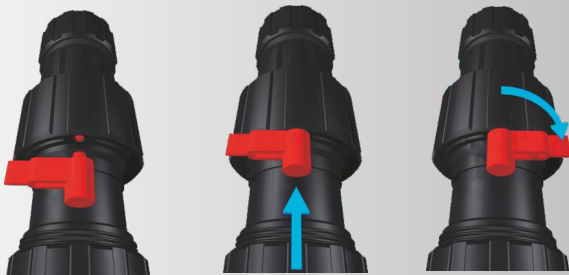
Assemble the components over the Lugs and onto the Cables



Connect the Lugs into the joining block and tighten with a spanner.
Ensure the Backshell Keys are correctly positioned to mate with each other.
Rotate the central locking ring until locks into the mated position, then tighten both backnuts.



Lock the Central Locking Ring using the remote locking / release key.



Fit Coloured identification bands if required.

Item	Part Number
LUGIT UNIT	LUGIT 185/300
Green Band	LCB-GN
Blue Band	LCB-BU
Brown Band	LCB-BR
Black Band	LCB-BK
Grey Band	LCB-GY
Locking / Release Key	REM-LK
Lug Palm Width / Bolt Hole	45mm max / 12mm
External Cable Ø	20mm – 37mm

